



Chuck Spanner
25546210

RAMX13LR

Exhaust Plunger
45001710



Exhaust Spring
27701810



Throttle Seat
45001510



Throttle Valve
45000910



Throttle Shim
22211310



Throttle Valve Spring
27701610



Loctite 242



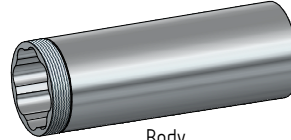
Inlet Hose Connector
45001610



Complete Hose & Overhose Assembly 17705320



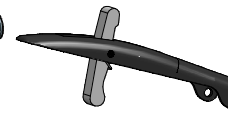
Hose Assembly
17712120



Adapter
16601510



Lever
14065120



Throttle Plug 45001110



O Ring 18824700



O Ring 18801100

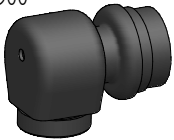


Valve Stem 27900310

Oiler Screw
51924900



Angle Head
13010310



Head Connector
52200510



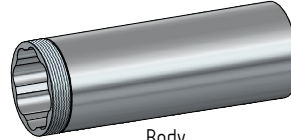
Spindle Casing
12103310



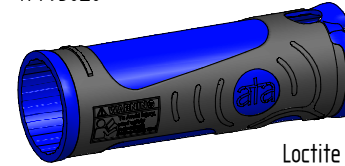
Body Coupling
45002410



Body
45001310



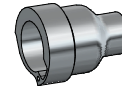
Moulded Sleeve
45000610



Loctite 242



Motor Lock Screw
45001410



Governor Housing
45000710

Bearing
15032400



Oiler
30225320



Bearing
15068900



Crown Gear
16382110



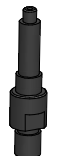
Bearing
15063500



Woodruff Key
30123800



Spindle
13101810



Spacer
23302810



Pinion Gear
16382110



Front Bearing Housing
15110310

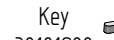
Front Rotor Spacer
24410210



Vanes: 4 Off
26610510



Key
30101200



Spindle
13101910



Bearing
15006700



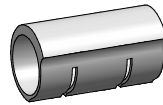
Bearing
15006700



Rear Rotor Spacer
24400710



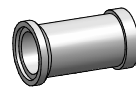
Cylinder
14411220



Rear Bearing Housing
15100810



Spindle Spacer
23384210



Bearing
15063500



Circlip
13210710



Coupling Hub
14001300



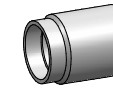
Coupling Insert
14001800



Coupling Hub
14001310



Spacer
23302510



Lever Pin
14014100



MOTOR SERVICE KIT

All parts shown highlighted with a blue box are included in service kit 555-200-20

MODEL	R.P.M	m3/min	kg	dB(A)	m/s ²
RAMX13LR	13000 RPM	0.62	1.30	75	<2.5