

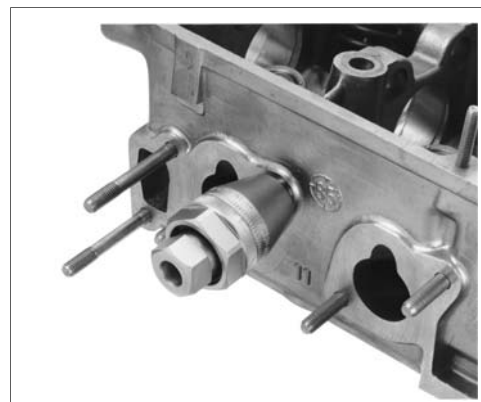
GEDORE

TOOLS FOR LIFE

Stud Tool



KL-0181-1



0181-1e100433.docx

GEDORE Automotive GmbH

Breslauer Straße 41
78166 Donaueschingen

Postfach 1329
78154 Donaueschingen - GERMANY

Tel.: +49 (0) 771 / 8 32 23-0
Fax: +49 (0) 771 / 8 32 23-90

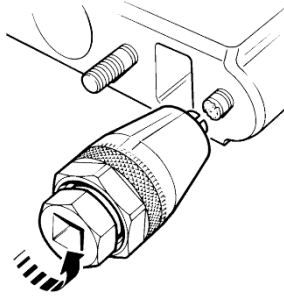
E-Mail: info@gedore-automotive.com
Internet: gedore-automotive.com

KL-0181-1



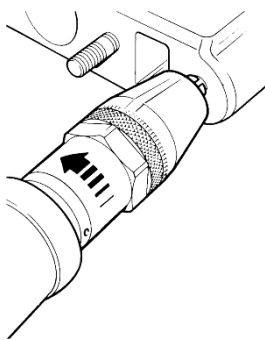
Fig. 1: Positioning the stud tool

“A”

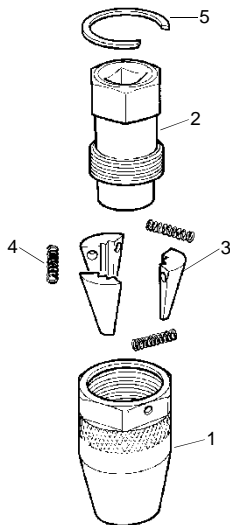


Unscrewing the stud

“B”



Scope of delivery: KL-0181-1



KL-0181-1 Stud Tool

Universally suitable.

Field of Application

This tool allows the user to easily unscrew stud bolts, screws etc. having diameter of from 6 - 12 mm..

Thanks to its handy design, the stud tool **KL-0181-1** can also be used in areas where space is very limited. It can already be mounted on bolts having a residual length of only 3 mm thus allowing the user to unscrew even short or broken off stud bolts.

The tool consists of a clamping nut (waf 36 mm) with a 3-part clamping element set fitted inside. This set enables an infinitely adjustable 6 – 12 mm clamping range.

The clamping segments can be adjusted to the required diameter via clamping screw (waf 24 mm).

Advantages

- Infinitely adjustable.
- Suitable for use in limited space conditions.
- Universal application.
- The special design of the tool ensures that when release pressure is increased, the clamping / gripping pressure on the stud is being increased too. This technique allows the stud to be securely held in the tool **KL-0181-1**.

Technical Data

Clamping nut: 36 mm
 Clamping screw: 24 mm
 Clamping screw drive: 3/8"□
 Weight: 420 g

Warnings and Notes

- Any work on vehicles should only be performed by qualified personnel observing and complying with the directions, provisions, and safety regulations issued by the vehicle manufacturer
- Before putting the tool into operation, visually check and make sure that it is not damaged.

Application

1. Place tool onto the stud to be removed. Close the clamping segments by turning the clamping screw counter-clockwise, while simultaneously counter-holding the clamping nut, until the the tool grips securely on the stud (**fig. 1 A**).
2. Unscrew stud by turning the clamping screw. (**fig. 1 B**)

Scope of Delivery

Pos.	Part No.	Description	Qty.
	KL-0181-1	Stud tool	1
<i>consists of:</i>			
1	KL-0181-1001	Clamping nut	1
2	KL-0181-1002	Clamping screw	1
3	KL-0181-1003	Set of segments (3-piece set)	1
4	KL-0181-1004/1	Set of springs (3-piece set)	1
5	KL-0181-1005	Circlip SB 30	1