

# User manual

## Eagle pneumatic reciprocating saw

EG178



**Eagle**  
PROFESSIONAL<sup>®</sup>

CE

Dear Customer,

Many thanks for the confidence in our products, that you have shown by purchasing your new Eagle air-tool. Every Eagle air-tool is carefully tested and is subjected to the strictest quality control procedures. To maintain a long service life of your tool, please read the operating and maintenance instructions thoroughly.

## Contents

1 Explanation of symbols .....	2
2 Declaration of compliance .....	2
3 Safety instructions .....	2
4 Main application .....	3
5 Specifications .....	3
6 Installation .....	4
7 Maintenance instructions .....	4
8 Operating instructions .....	5
9 Exploded view .....	7

## 1 Explanation of symbols

In this operating manual the following symbols are used:



*Read the operating manual carefully*



*Wear eye and ear protection*



*Wear protective work gloves*



*Wear a dust mask*



*Your special attention is asked for important specific instructions or safety risks*

## 2 Declaration of compliance

On our own responsibility, we hereby declare that this product complies with the standards or standard-setting documents as listed on the rear page.

## 3 Safety instructions



Before using this air-tool, read the operating instructions thoroughly. Keep all documents supplied with the tool in a safe place and pass them on to other users.

Only use this air-tool the way it is designed to. All modifications are strictly prohibited and may cause serious injury.

### Protection



1



2



3

Always wear:

- (1) protective work gloves.
- (2) eye protection and ear protection.
- (3) a dust mask.

Working with air-tools can result in serious injury caused by:

- Chips, dust and other particles.
- Breaking or damaged blades.
- Excessive exposure to noise that may cause permanent hearing loss.
- Whipping air hoses caused by bad connections or damaged hoses.

### Warnings



- Do not use this tool in potentially explosive atmospheres.
- Never let air-tools get in contact with sources of electricity.
- Avoid unintentional starting of the tool.
- Unexpected tool movement caused by reaction forces or breakage of accessories can cause injuries.
- Release the start/stop lever in case of an interruption of the air supply.

- After releasing the start/stop lever, the tool will run for a short period of time.
- Always disconnect the air pressure hose before adjusting the tool or changing accessories.
- Loose clothing and hair can get caught by the blade and may cause serious injuries.
- When working in tight spaces hand injuries may occur caused by reaction forces
- Keep children away from air-tools.
- Only use this tool when assured that your body is in a position to counteract to the possible reaction forces caused by stalling.
- Always keep the tool clean and dry.
- Always keep the work area clean, sufficiently ventilated and well lit.
- Repairs must be carried out by authorized persons only.

- Make sure the work piece is properly supported or fixed.
- Check that the work piece is in such a position that the created opening will become wider or remain the same, thus preventing the tool from stalling. Stalling will cause unexpected reaction forces.
- If the blade gets jammed, immediately shut off the tool and ease the blade free. Thoroughly inspect the blade for damage before proceeding.
- Pay special attention to the dangers of dust and fumes resulting from sawing dangerous materials. Always wear a dust mask.
- Do not operate the saw with bystanders present.
- Examine the saw thoroughly before each use and especially when the tool has been dropped.

### Special warnings for blades



- Never use cracked or deformed blades.
- Only use blades of the correct size.

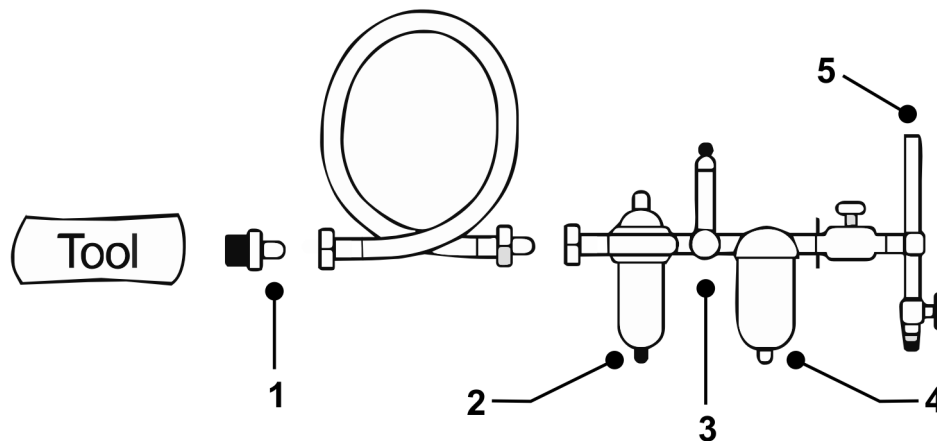
### 4 Main application

This tool is intended for the sawing metal, aluminium and plastics in combination with good quality proper fitting blades.

### 5 Specifications

Technical specifications	
Item nr.	EG178
Max free speed [blows per minute]	9500
Vibrations [m/s <sup>2</sup> ]	3
Air inlet [inch]	1/4
Air consumption [l/min]	36
Max. air pressure [bar]	6,2
Sound power level [dBA]	88
Weight [kg]	0,55
Length [mm]	160

## 6 Installation



1. Quick coupling
2. Automatic lubricator
3. Regulator

4. Water separator
5. Air supply

### Connecting

Use high quality hoses and couplings only.

### Air pressure

Use 6,0 bar air pressure in combination with a good working air dryer.

The use of a higher air-pressure can lead to a shorter service life and injuries caused by the higher rpm.

### Lubrication

Use an automatic in-line lubricator that is set to 2 drops/min. If there is no automatic lubricator available: lubricate by hand with 1 – 2 drops of special air-tool oil (SAE 10) through the air-intake of the air-tool



*Disconnect the air-tool before manually lubricating the air-tool.*

## 7 Maintenance instructions



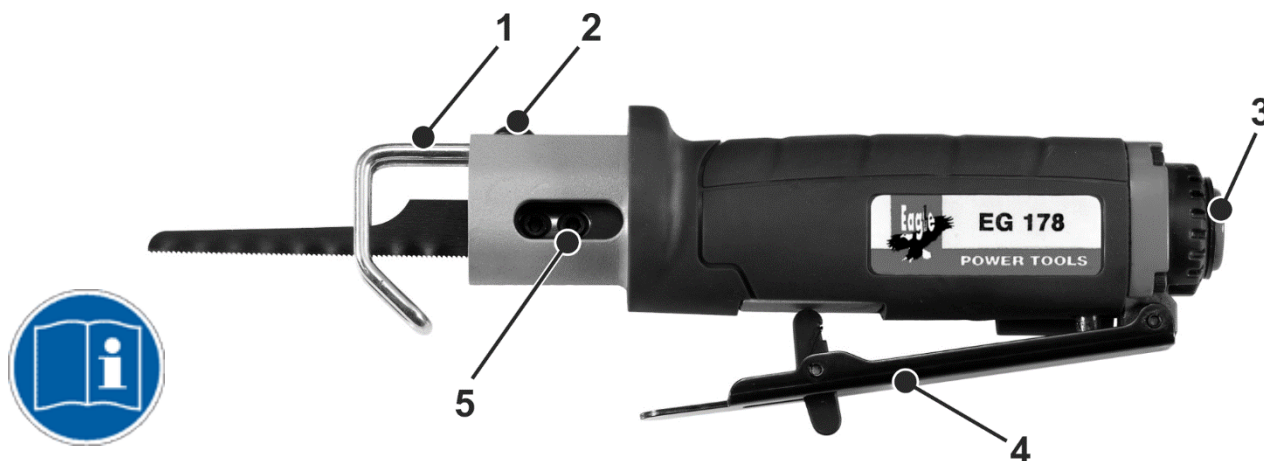
*Disconnect the air-tool before executing maintenance.*

Oil daily. Only use lubricants recommended by the manufacturer (SAE 10). Before storing the tool, lubricate through the air-intake and run the tool for a short time.

Thoroughly inspect the air-tool every 3 months when used daily.

Only use original spare parts, that are available through your distributor.

## 8 Operating instructions



1. Guide
2. Guide screw
3. Air intake

4. Start/stop lever
5. Blade screw

**Check if the maximum air pressure is set to the specified value.**



*Disconnect the air-tool before changing blades or adjusting the guide*



*Check that the blade is fitted properly and is properly clamped before each use.*



*Use the correct type of blade for the material. Check the number of teeth.*

### Removing/installing the blade

Hold the tool firmly.

Loosen the blade screw with the supplied Allen key.

Insert a new blade of the correct type. Push it in as far as possible. Ensure the blade is not damaged in any way.

Securely tighten the blade screw.



*Only use original Eagle blades of the correct size.*

### Check if the blade is fitted properly

Let the tool run at free speed for 30 s in a safe position. Stop immediately if the vibration or the side movement of the blade is too high or other problems are detected.

In case of any defects: disconnect the tool and solve the defect.

### **Adjust the guide**

Loosen the guide screw with the supplied Allen screw.

Slide the guide forwards or backwards as desired.

Fasten the guide screw.

### **Operating the tool**

Securely clamp the workpiece.

Firmly hold the tool using both hands.

Rest the guide on the workpiece, without the blade touching the workpiece.

Start the tool and carefully let the blade touch the workpiece.

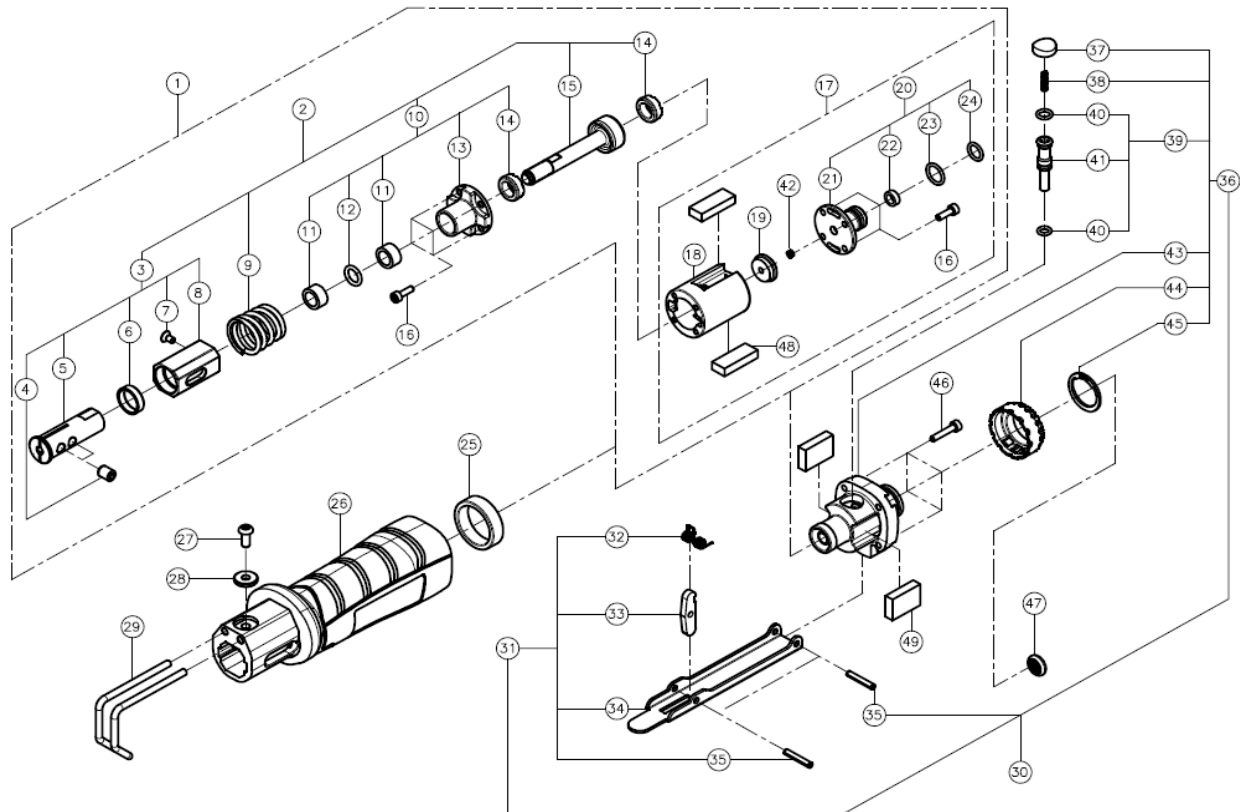
Move the tool through the workpiece.

Stop the tool when finished.



*Inspect the blade thoroughly on wear before each use.*

## 9 Exploded view



Index	Part No.	Description	Q'ty	Index	Part No.	Description	Q'ty
1	EGB5600-0001	Cylinder Group	1	26	EGB5400-0001	Main Body jacket Ass'y	1
2	EGB5600-0021	Cylinder Front Group	1	27	EGA0000-0681	BHSC Screw 5*10	1
3	EGB5500-0051	Spindle Group	1	28	EGA0005-2081	Washer Ø12*Ø5.2*2T	1
4	EGA0003-0601	Bolt M6*8	2	29	EGA0711-3931	Guide Rod	1
5	EGA5501-0001	Spindle	1	30	EGB5500-0011	Control Valves whole group	1
6	EGA5603-0011	Rings	1	31	EGB5500-0041	Safety Trigger Ass'y	1
7	EGA0000-1451	Screw M3*6	1	32	EGA0101-0771	Spring	1
8	EGA5603-0021	Bush	1	33	EGA5501-0021	Safety Trigger Ended Block	1
9	EGA0104-0091	Conical Spring	1	34	EGA5500-0001	Safety Trigger	1
10	EGB5600-0031	Cylinder Head Group	1	35	EGA0011-0601	Spring Pin 3*18	2
11	EGA5603-0001	Copper Sleeve	2	36	EGB5500-0021	Control Valves Group	1
12	EGA0200-1871	O-ring Black	1	37	EGA5603-0041	Rubber Plug	1
13	EGA5601-0001	Cylinder Head	1	38	EGA0100-0551	Spring 2.9*11.5L	1
14	EGA0309-1111	Bumper	2	39	EGB5500-0031	Valve Stem Group	1
15	EGA5602-0011	Piston	2	40	EGA0200-1891	O-Ring 3.69*1.78	2
16	EGA0000-1741	Hex Socket Head Screw M3*10	8	41	EGA5501-0011	Valve Stem	1
17	EGB5600-0011	Cylinder After Group	1	42	EGA0100-4001	Spring 6.7*4.5L	1
18	EGA5600-0001	Cylinder	4	43	EGA5502-0011	Control Valve	1
19	EGA5602-0001	Valve Plate	4	44	EGA5502-0021	Exhaust Cover	1
20	EGB5500-0001	Guide Valve Group	1	45	EGA0005-2091	C-Ring	1
21	EGA5502-0001	Guide Valve	1	46	EGA0000-2391	Screw M3*16	4
22	EGA0309-1091	Guide Valve Bumper	1	47	EGA0203-0311	Metal Filter	1
23	EGA0200-0611	O-Ring 8.9*1.6	1	48	EGA0203-0321	Muffler #1	2
24	EGA0200-5831	O-Ring 7.5*1.5	1	49	EGA0203-0331	Muffler #2	2
25	EGA0309-1101	Body Bumper	1				



# EU Declaration of Conformity



Machinery Directive **2006/42/EC**

For the following equipment

Product : Pneumatic reciprocating saw  
Multiple List Model No. : EG178  
Brand Name : EAGLE

Complies with the requirements of the European Community Directive 2006/42/EC.

The above product(s) has (have) been tested and has been found in compliance with the European Standards as listed below.

EN 792-12:2000+A1:2008

Responsible for making this declaration is the:

Brand Owner  Authorized representative established within the EU

Company Name : Serenco Nederland B.V.  
Company Address : Maarssebroeksedijk 39  
3542DM Utrecht  
The Netherlands  
Company Phone : + 31 (0) 30 2415011  
Company Fax : + 31 (0) 30 2415046

Person responsible for making this declaration

Name : R.F. Geirnaert  
Position/Title : Director

Utrecht  
(place)

June 1, 2018  
(Date)

  
**SERENCO**   
Serenco Nederland B.V.  
Maarssebroeksedijk 39  
NL - 3542 DM UTRECHT  
(Company stamp and legal signature)