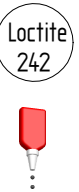
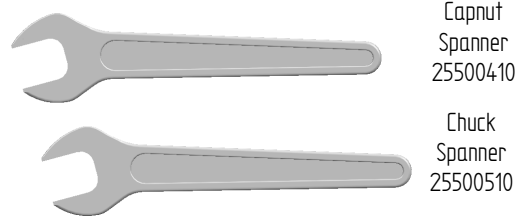
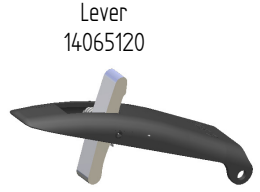


# SM RANGE (SM25L, SM16L, SM10L)

This Symbol indicates 242 Loctite Required

Capnut Spanner 25500410  
Chuck Spanner 25500510



Lever 14065120



Throttle Plug 45001110



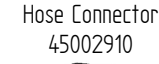
O Ring 18824700



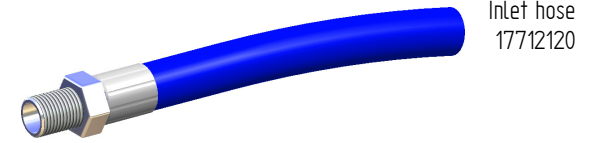
O Ring 18801100



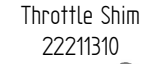
Valve Stem 27900310



Hose Connector 45002910



Inlet hose 17712120



Throttle Shim 22211310



Throttle Seat 45001510

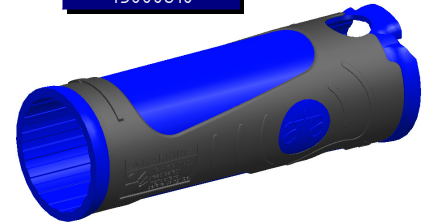


Throttle Valve 45000910

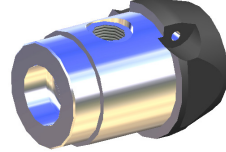
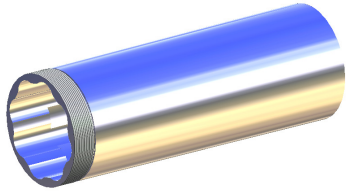


Throttle Valve Spring 27701610

Moulded Sleeve 45000610



Body 45002710



Throttle Assembly  
SM25L 45003420  
SM16L 45003320  
SM10L 45003220



Lever Pin 14014100

Loctite 242

Loctite 242

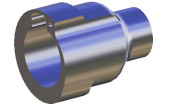
Bearing 15009800



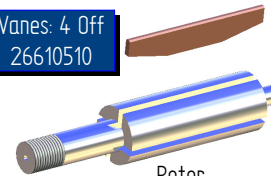
Motor Lock Screw 45001410 FOR SM25L

Governor  
SM25L N/A  
SM16L 45003020  
SM10L 45002020

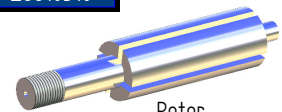
Throttle Housing 45000710



Vanes: 4 Off 26610510



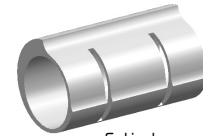
Rotor 21101310



Rear Rotor Spacer 24400710



Cylinder 14411220



Rear Bearing Housing 15100810



Front Bearing Housing 15110310



Bearing 15068900



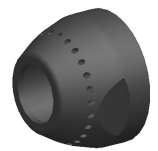
Front Rotor Spacer 24410210



Collet/ Capnut Assembly  
6mm 12261120  
8mm 12261220  
3mm 12261320  
1/4" 12261520  
1/8" 12261620



Chuck 13101310



Front End Cap 45003110

**MOTOR SERVICE KIT**  
All parts shown highlighted with a blue box are included in service kit 555-193-20

## STRIPPING TOOL SET PART NUMBER 90055620

MODEL	R.P.M	m <sup>3</sup> /min	kg	dB(A)	m/s <sup>2</sup>
SM25L	25000 RPM	0.62	0.71	77	<2.5
SM16L	16000 RPM	0.62	0.71	75	<2.5
SM10L	10000 RPM	0.62	0.71	74	<2.5