

IRONSIDE®

360104/G
IR202234

Ketel - cuve : 50L
Kop - tête : 3,0 HP
Debiet - débit : 380 l/min
Druk - pression: 10 bar
Geluidsniveau - niveau sonore: 97 dB max
Spanning - tension: 220-240V, 50 Hz
Gewicht - poids: 41,5 kg

MET OLIE
AVEC HUILE

Inductiemotor met
thermische beveiliging
Voor een langere levensduur

2 manometers en 2 universele koppelingen
2 manomètres et 2 raccords universels

Moteur à induction
avec protection thermique
Pour une durée de
vie plus longue

Twee zuigers
Bi-Cylindre



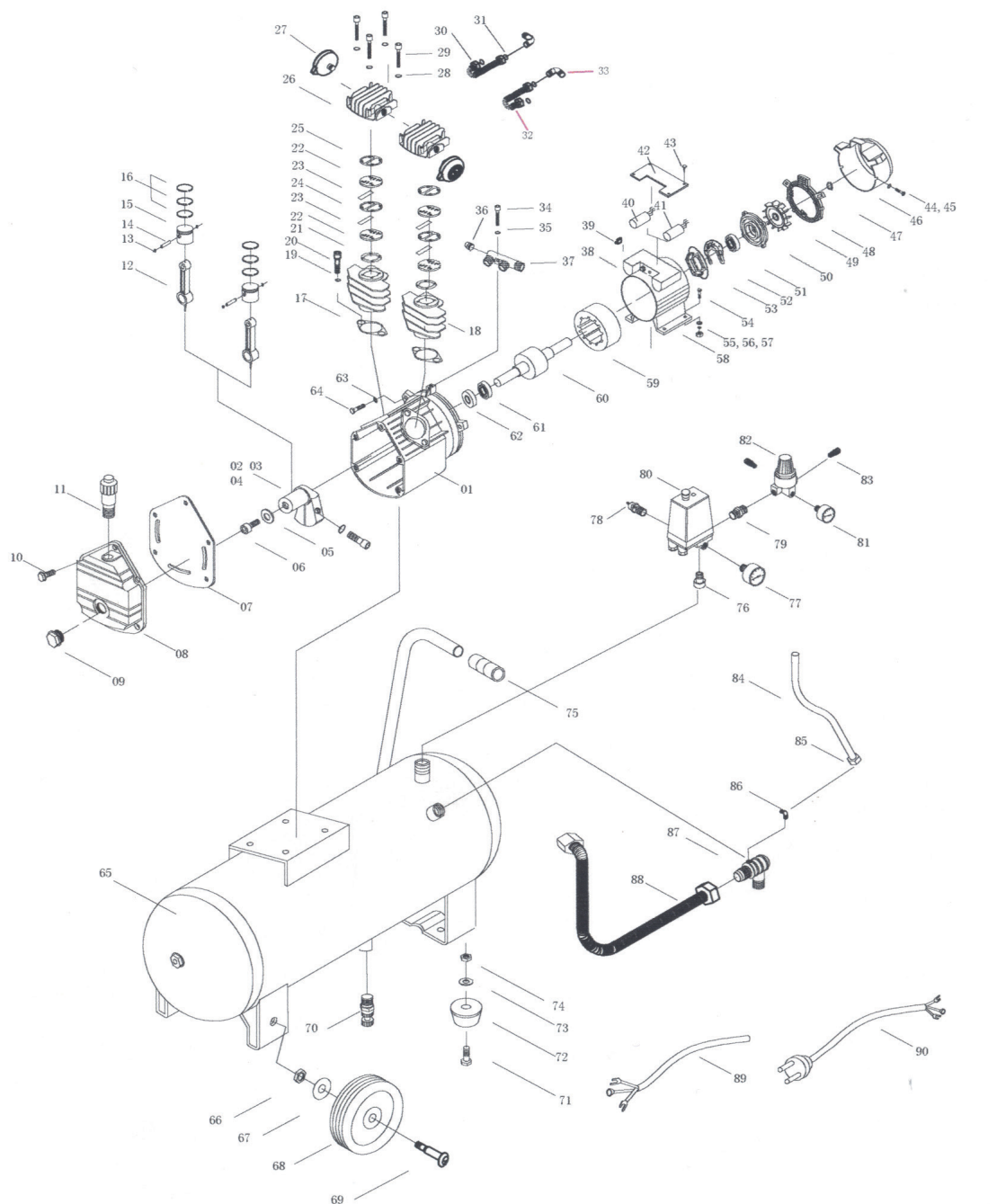
69 cm

33 cm

BOX:
W740xD315xH670 mm

73 cm

IRONSIDE®



- | | | | | | |
|--------------------|--------------------------|------------------------------|--------------------------|------------------|---------------------|
| 1. Crankcase | 16. Piston ring | 30. Left exhaust pipe 230 mm | 45. Bolt | 60. Rotator | 76. Connect |
| 2. Crank shaft | 17. Gasket | 31. Gasket | 46. Cover | 61. Bearing | 77. Pressure gauge |
| 3. Spring | 18. Cylinder | 32. Right exhaust pipe 210mm | 47. Circlip | 62. Oil sealing | 78. Safety valve |
| 4. Bolt | 19. Spring | 33. Elbow | 48. Outside covers | 63. Spring | 79. Connect |
| 5. Washer | 20. Bolt | 34. Bolt | 49. Fan | 64. Bolt | 80. pressure switch |
| 6. Bolt | 21. Gasket | 35. Spring | 50. Rear bearing crank | 65. Tank | 81. Pressure gauge |
| 7. Gasket | 22. Valve plate | 36. Start | 51. Bearing | 66. Nut | 82. Regulator |
| 8. Crankcase cover | 23. Valve | 37. T-connection | 52. centrifugal film | 67. Washer | 83. Quick valve |
| 9. Oil gauge | 24. Valve gasket | 38. Electric capacity box | 53. centrifugal switch | 68. Wheel | 84. Unloading pipe |
| 10. Bolt | 25. Cylinder head gasket | 39. Overload protector | 54. Bolt | 69. Bolt | 85. Unloading nut |
| 11. Breath | 26. Cylinder head | 40. Capacitance | 55. Washer | 70. Drain cook | 86. Elbow |
| 12. Connecting rod | 27. Air filter | 41. Capacitance | 56. Spring | 71. Bolt | 87. Check valve |
| 13. Circlip | 28. Spring | 42. Cover | 57. Nut | 72. Cushion foot | 88. Exhaust pipe |
| 14. Piston pin | 29. Bolt | 43. Bolt | 58. Electricity cylinder | 73. Washer | 89. Electrical wire |
| 15. Piston | | 44. Washer | 59. Stator | 74. Nut | 90. Plug |