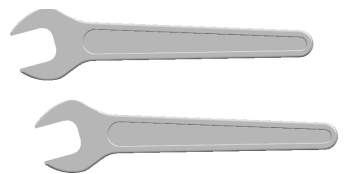




SMX RANGE (SMX25L, SMX16L, SMX10L)



Chuck Spanner
25561110

Capnut Spanner
25561210

Throttle Valve
45000910

Throttle Seat
45001510

Throttle Shim
22211310

Throttle Valve Spring
27701610

Loctite 242

Hose Connector
45002910

Hose Assembly
17712120

Lever
14065120

Throttle Plug
45001110

O Ring
18824700

O Ring
18801100

Valve Stem
27900310

Moulded Sleeve
45000610

Throttle Assembly
45003820

Lever Pin
14014100

Front End Cap
15801310

Moulded Front Body
45002510

Spindle Casing
12103010

Body Coupling
45002410

Body
45001310

Loctite 242

Motor Lock Screw
45001410 for
SMX25LR

Governor
SMX 25LR N/A
SMX 16LR 45003020
SMX 10LR 45002020

Governor Housing
45000710

Rotor
21101410 SMX25LR
21101410 SMX16LR
21101910 SMX10LR

Key
30101200

Rear Rotor Spacer
24400710

Bearing
15068900

Front Rotor Spacer
24410210

Vanes: 26610510
4 Off SMX25LR, SMX16LR
5 Off SMX10LR

Cylinder
14411220

Rear Bearing Housing
15100810

Bearing
15009800

Bearing
15063500

Circlip
13210700

Coupling
14001310

Coupling Insert
14001800

Coupling
14001310

Spacer
23302510

Front Bearing Housing
15110310

Key
30101200

Spacer
23306410

Bearing
15006700

Bearing
15006700

Spindle Spacer
23384010

Capnut
12260810

6mm Collet
13312110

Spindle
27501310

Also Available

8mm 13312410
10mm 13310610

1/4" 13310710
3/8" 13312510
1/8-3mm" 13312310

MOTOR SERVICE KIT

All parts shown highlighted with a blue box are included in service kits
Order 55519820 for SMX10L
Order 55519920 for SMX16L & SMX25L.

This Symbol indicates 242 Loctite Required



MODEL	R.P.M	m ³ /min	kg	dB(A)	m/s ²
SMX25L	25000 RPM	0.62	1.30	77	<2.5
SMX16L	16000 RPM	0.62	1.30	75	<2.5
SMX10L	10000 RPM	0.62	1.30	74	<2.5