



EN

MEC 200

LEVEL INDICATOR FOR 200 LT BARRELS



Operating temperature

-10 – 45 °C

Storage temperature

-15 – 50 °C

Batteries (not rechargeable)

AAA Alkaline

Directive
2004/108/CE (EMC)

Rule of law:

EN 61326:2013



Before using the MEC 200 device read carefully this user's manual.

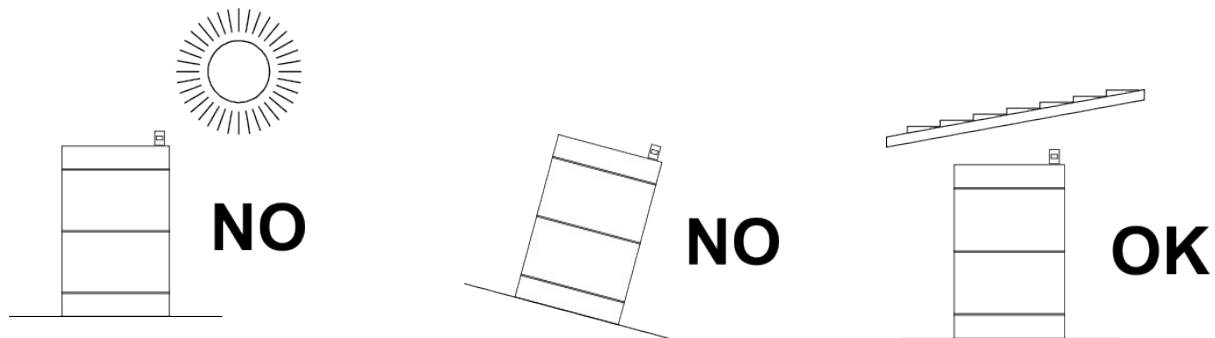
DESCRIPTION

MEC 200 is an electronic device, using ultrasounds it is able to calculate the distance from a liquid or solid and through an algorithm transform it into volume. With the calibration set by the producer, MEC 200 is able to measure the level of liquid contained in a partially opened barrel with standard size 200/210 liters. Thanks to its practical shape and its "easy read" quality, MEC 200 can be easily installed on the majority of barrels actually in the market.

WARNINGS

In order to use the device properly read carefully the following information:

- Do not use the device on barrels containing flammable liquids or releasing explosive gas;
- Do not put the device into direct contact with the contents of the barrel;
- Do not use the device on barrels placed on a slopping area;
- Do not immerse the device into liquids or spill liquids on it;
- Do not move the barrel when the device is installed;
- Do not expose the device to direct sunlight (the measurement will be compromised);



ENVIROMENTAL CONDITIONS

To obtain a correct measurement follow the following indications:

- Avoid exposing the device MEC 200 to direct sunlight or to temperature higher than 45°C;
- Avoid using the device MEC 200 in moist locations and with temperatures lower than -10°C.

In unfavourable locations, the device could give wrong measurement.

DEVICE CLEANING

To clean the device externally, use a moist fabric with neutral cleanser.

To clean the device internally, turn off the device, remove the cover and take the batteries out, remove the circuit board of MEC 200 from its casing and immerse it for a set of ten minutes in the CLEANER (specific product to clean board circuits). Take the board circuit out of the cleanser, wait until it is dry and then reassemble the device.

To avoid an irreversible damage, do not use aggressive solvents or cleansers, do not use brushes or abrasive tools, do not dry with the aid of hot airflow or compressed air, do not reassemble the device if it is still wet and do not invert the polarity of the batteries.

REPLACEMENT OF THE BATTERIES

Unscrew the 4 screws in the back of the device, remove the cover and the old batteries, insert the new ones (pay attention to respect the polarity), replace the cover and screw the 4 screws.

Use only AAA Alkaline non-rechargeable batteries.

INSTALLATION

Follow the following instructions:

- Remove the cap by $\frac{3}{4}$ from the barrel [Exhibit 1];
- Screw the device MEC 200 till the end on the threaded hole by $\frac{3}{4}$ [Exhibit 2];

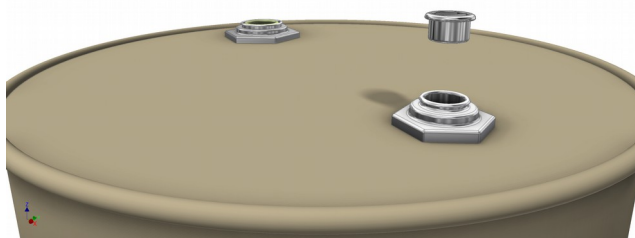


EXHIBIT 1

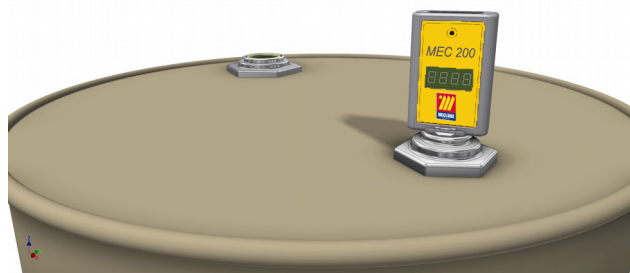
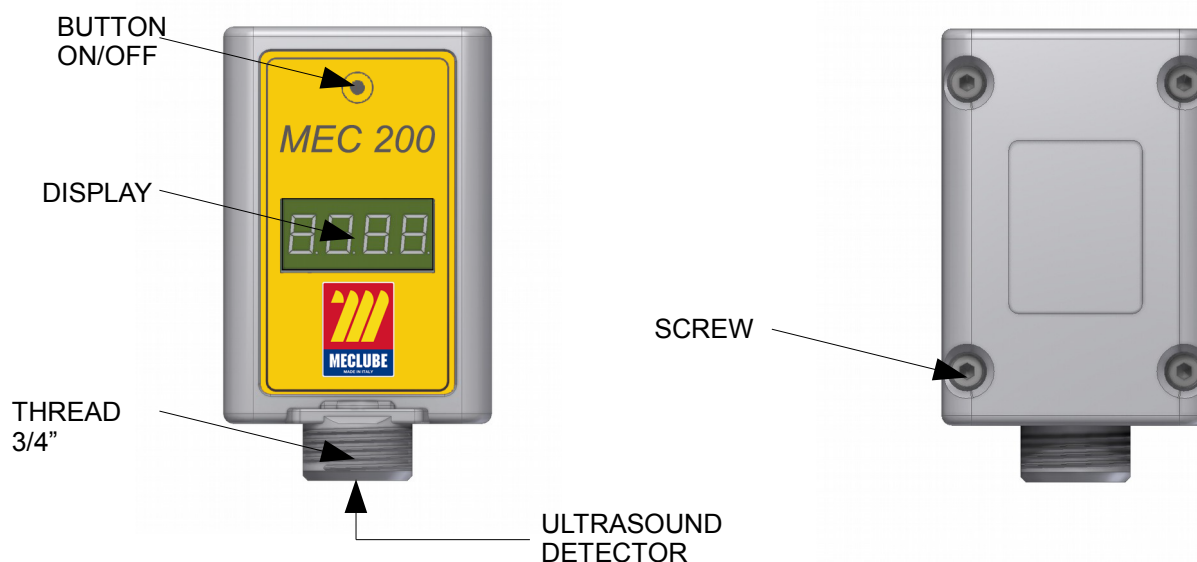


EXHIBIT 2

COMPONENTS OF THE DEVICE



MODE OF OPERATION

STARTING/SWITCHING OFF

Press the button over the display for more than 3 seconds, the writing "On" appears in case of starting the device, the writing "Off" appears in case of switching off.

AUTOMATIC MEASUREMENT

Once the device is on, MEC 200 will make level measurement every 20 minutes, without showing anything in the display. When the flashing writing "ALL. 20 L." appears, a first stock alarm is detected, this informs the operator that the level of stock available in the barrel is between 20 and 10 lt. At the occurrence of this alarm, the device continues to show the alarm status until the button on/off is rapidly pressed, thereafter at every press of the button a single measurement will be displayed.

When the flashing writing "ALL. 10 L." appears, a second stock alarm is detected, this informs the operator that the level of product available inside the barrel is between 10 and 0 lt. At the occurrence of this second alarm, the device continues to signal the alarm until it is switched off and/or the empty barrel is substituted with a full one.

INSTANTANEOUS MEASUREMENT

When pressing quickly the button on/off, if the writing "FULL" appears it indicates that inside the barrel there are more than 145 lt, if the level of the barrel contents is between 145 and 20 lt the effective level will be indicated to the operator. In case the level is under 20 lt the different stock alarm level will be indicated.

DISCHARGE BATTERIES

When the batteries of the device are discharged, the device detects an alarm. It is displayed with 4 points flashing every 5 seconds. In this status the MEC 200 does not provide measurements, switch the device off and change the batteries.

DISPOSAL OF THE DEVICE



At the end of the life cycle of the device to protect the environment dispose the device according to the local applicable law. When the device is no more usable or reparable, proceed with the differentiated disposal of the components. The electrical equipment can not be disposed as urban waste, it is necessary to respect the separate collection procedure introduced by the directive on the disposal of electrical wastes (Legislative

Decree n. 151 of 25/07/2005 for the implementation of the directives 2002/95/CE, 2002/96/CE and 2003/108/CE, regarding the reduction of usage of dangerous substances in the electric and electronic devices along with the disposal of wastes).

The electrical devices are marked with the symbol above. The cross dustbin symbol means that the device was put in the market after the 13/08/2005 and is subjected to separate collection.

An inadequate or illegal disposal of the equipment, or an irregular use of them, taking in consideration the substances and materials contained, can provoke damages at people and at the environment. The disposal of electrical wastes that does not respect the applicable law is subjected to penalties and measures laid by the law.

This equipment can be restituted to the seller only in case of purchase of a new one of the same type. The seller will provide to the correct disposal of the device according to the local applicable law.

WARRANTY

The warranty lasts 1 year starting from the delivery date. It covers material or manufacturing defects and is limited to the substitution or repair of the blemished parts without the possibility to claim for benefit, interest or damages.

The producer assumes no responsibility in case of incorrect installation or non-compliance to the instructions.



MECLUBE s.r.l.

Strada Pavesa 13 Loc. Bondeno
46023 Gonzaga - Mantova ITALIA

Tel. 0039.0376 595006 Fax. 0039
0376 54144 info@meclube.com
www.meclube.com