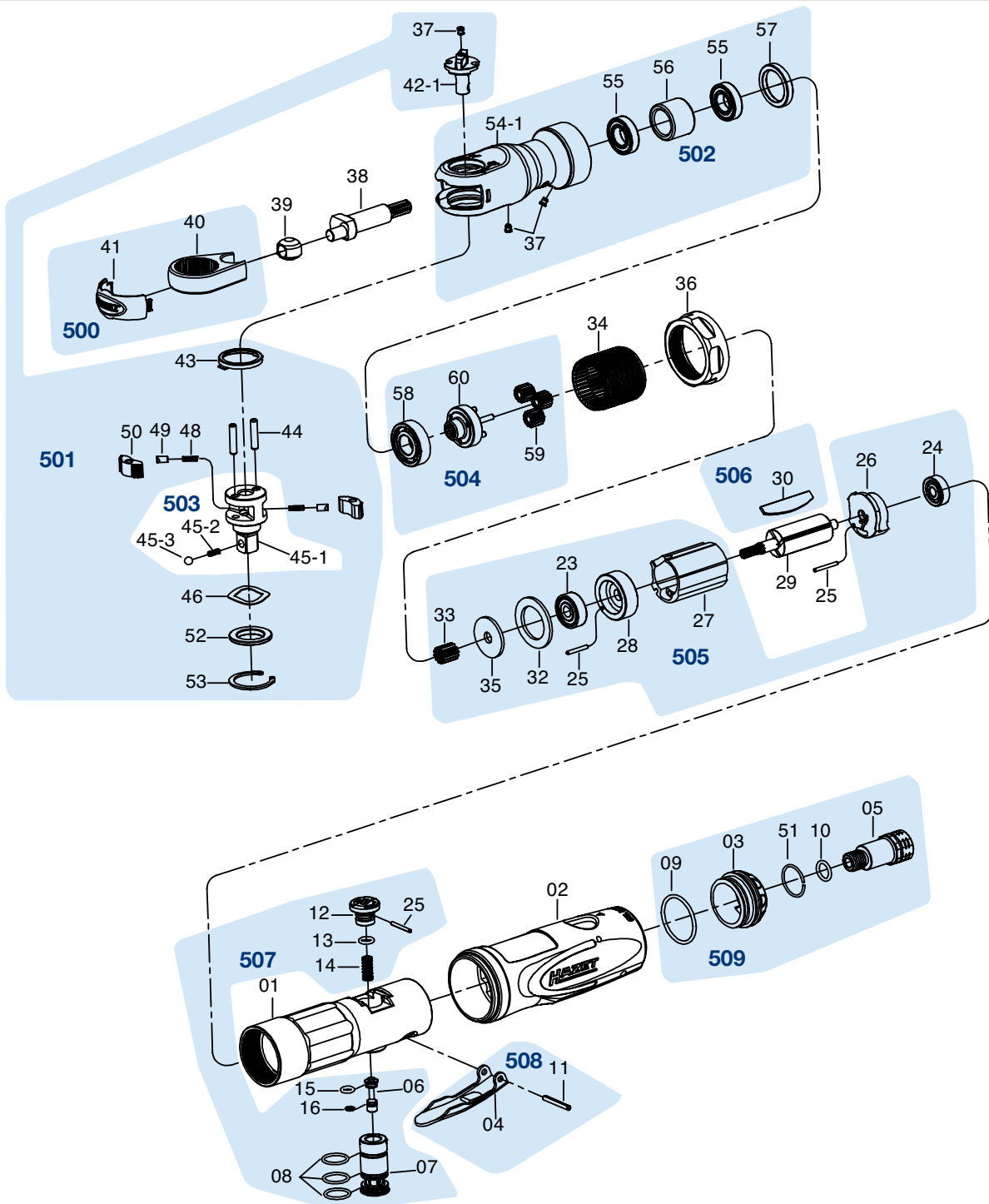



Erersatzteile 9022 P-2



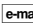


	HAZET No.	Bezeichnung	Name	
1	9022P-2-01	Motor-Gehäuse	Motor-Housing	1
2	9022P-2-02	Handgriff	Rubber-Grip	1
29	9022P-2-04	Rotor	Rotor	1
34	9022P-2-05	Zahnkranz	Ring-Gear	1
36	9022P-2-06	Mutter	Coupling-Nut	1
38	9022P-2-07	Kurbelwelle	Crankshaft	1
39	9022P-2-08	Antriebsbuchse	Drive Bushing	1




	HAZET No.	Bezeichnung	Name	
500	9022P-2-09/2	Gabel Satz Inhalt: 40, 41	<i>Ratchet-Yoke Set</i> <i>Contents: 40, 41</i>	1
501	9022P-2-010/14	Ratschen-Innenteile Satz Inhalt: 37, 42-1, 43, 44 (2x), 48 (2x), 49 (2x), 50 (2x), 46, 52, 53	<i>Ratchet-Repair Set</i> <i>Inhalt: 37, 42-1, 43, 44 (2x), 48 (2x), 49 (2x), 50 (2x), 46, 52, 53</i>	1
502	9022P-2-011/7	Ratschen-Gehäuse Satz Inhalt: 37 (2x), 54-1, 55 (2x), 56, 57	<i>Ratchet-Housing Set</i> <i>Inhalt: 37 (2x), 54-1, 55 (x2), 56, 57</i>	1
503	9022P-2-012/3	Vierkant Satz Inhalt: 45-1, 45-2, 45-3	<i>Anvil Set</i> <i>Contents: 45-1, 45-2, 45-3</i>	1
504	9022P-2-013/5	Antrieb Satz Inhalt: 58, 59 (x3), 60	<i>Idler-gear Set</i> <i>Contents: 58, 59 (x3), 60</i>	1
505	9022P-2-014/10	Zylinder-Einheit Satz Inhalt: 23, 24, 25 (2x), 26, 27, 28, 32, 33, 35	<i>Cylinder Set</i> <i>Inhalt: 23, 24, 25 (2x), 26, 27, 28, 32, 33, 35</i>	1
506	9022P-2-015/4	Lamelle Satz Inhalt: 30 (x4)	<i>Blades Set</i> <i>Contents: 30 (x4)</i>	1
507	9022P-2-016/11	Ventileinheit Satz Inhalt: 6, 7, 8 (3x), 12, 13, 14, 15, 16, 25	<i>Valve Set</i> <i>Inhalt: 6, 7, 8 (3x), 12, 13, 14, 15, 16, 25</i>	1
508	9022P-2-017/2	Abzugshebel Satz Inhalt: 4, 11	<i>Trigger Set</i> <i>Contents: 4, 11</i>	1
509	9022P-2-018/5	Luftauslass Satz Inhalt: 3, 5, 9, 10, 51	<i>Air-Exhaust Set</i> <i>Contents: 3, 5, 9, 10, 51</i>	1

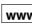
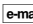
Alle Positionen, die keine **HAZET** No. haben, sind nur über den HAZET-Service zu bestellen

Zur Bestellung und für Rückfragen wenden Sie sich bitte an unsere Service-Abteilung.

 +49 (0) 21 91/7 92 355 •  +49 (0) 21 91/7 92 523 •  service-center@hazet.de

HAZET - WERK Hermann Zerver GmbH & Co. KG •  10 04 61 • D-42804 Remscheid • Germany

 +49 (0) 21 91 / 7 92-0 •  +49 (0) 21 91 / 7 92-375 (National) •  +49 (0) 21 91 / 7 92-400 (International)

 www.hazet.de •  info@hazet.de