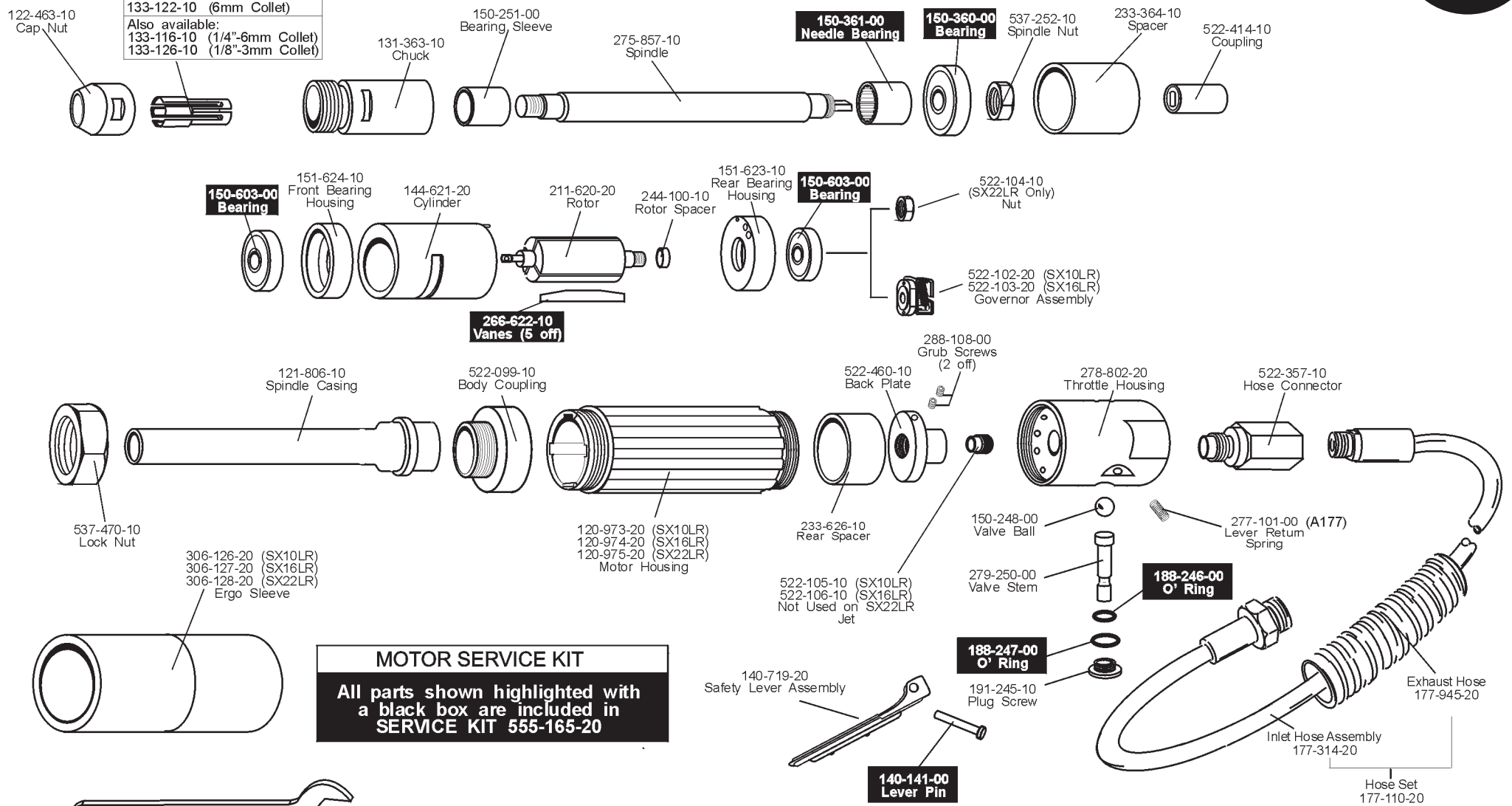


ATA MODEL SX22LR, SX16LR & SX10LR PARTS LIST

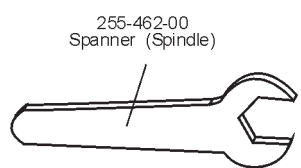
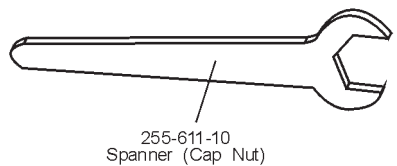


990-059-10 | 140302

133-122-10 (6mm Collet)
 Also available:
 133-116-10 (1/4"-6mm Collet)
 133-126-10 (1/8"-3mm Collet)



MOTOR SERVICE KIT
 All parts shown highlighted with a black box are included in SERVICE KIT 555-165-20



STRIPPING TOOL SET PART NUMBER 900-115-20

MODEL	R.P.M.	m ³ /min	kg	dB(A)	m/s ²
SX22LR	22,000	0.75	1.10	69	< 2.5
SX16LR	16,000	0.75	1.10	66	< 2.5
SX10LR	10,000	0.75	1.10	65	< 2.5